



DESIGN CONCEPT DEVELOPMENT

## BINGIN VILLA CLUSTER, BALI

*Eight villas form a compact cluster, carefully positioned to preserve both separation and openness. Within each unit, two bedrooms, a shared living space, a pool, and a rooftop sunken lounge unfold as a continuous sequence, complemented by skylit showers that bring daylight into private routines.*

*A sun-kissed sanctuary where tropical warmth flows through soft curves and effortless comfort. Sink into slow days shaped by light and breeze, spend easy afternoons by the pool, and end with a cliffside sunset where sky and ocean melt into vibrant colour — a barefoot luxury retreat that follows the rhythm of the coast and the feeling of an endless holiday.*



**LOCATION**

Bali

**CLIMATE FACTS**

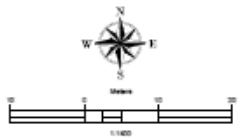
Hottest period : May – September (27-33°C)

Coldest period : January – April (23-25°C)

Annual temperature : 27°-29C



BASE  
 X = 9825678.954  
 Y = 2204495.258  
 Z = 56.544



A person is seen from behind, standing on a paddleboard and moving across the ocean. The sun is low on the horizon, creating a golden glow and long, shimmering reflections on the water's surface. The person's shadow is cast on the board.

*SUNSTRUCK*

A view from a balcony or terrace looking out at the ocean. Sheer, light-colored curtains hang on the left side of the frame. In the foreground, a dark wooden table with two thick legs holds a dark, shallow bowl. The ocean is visible in the distance under a clear sky.

*PANORAMIC*

A modern interior space featuring a white staircase with wide, flat steps. A large, arched opening in the wall frames the scene. A palm frond is visible in the upper left corner, and a terracotta pot is partially visible in the lower left. The lighting is soft and warm.

*RHYTHMIC*

**BINGIN VILLAS | GUEST EXPERIENCES**

## BREEZY COMFORT

*Sink into serenity, where soft light, a gentle breeze, and effortless style come together in quiet balance — a space designed to slow the senses, soften awareness, and let every moment unfold in perfect harmony, creating a calm presence that lingers beyond the space itself.*





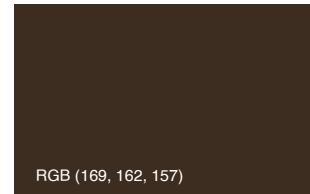
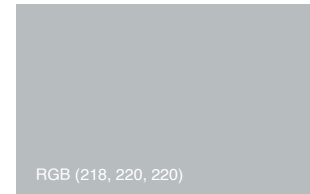
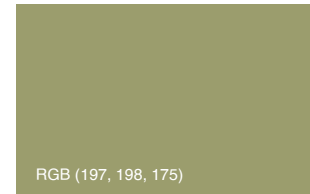
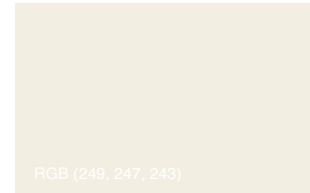
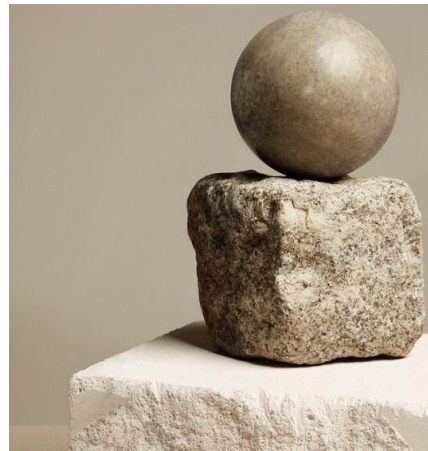
## CLIFFSIDE SUNSET MAGIC

*Catch a stunning sunset from the cliff's edge, where the sky and ocean blend in vibrant colour, shifting gradually as the sun lowers beyond the horizon and the surrounding calm wraps the moment in a quiet, lingering warmth that stays with you long after the light fades.*

## SPLASH OF SUN

*Soak up the rays, dive into good vibes — it's pool o'clock somewhere, where the sun lingers overhead, the water glows softly around you, and the afternoon stretches into a relaxed, carefree stillness.*



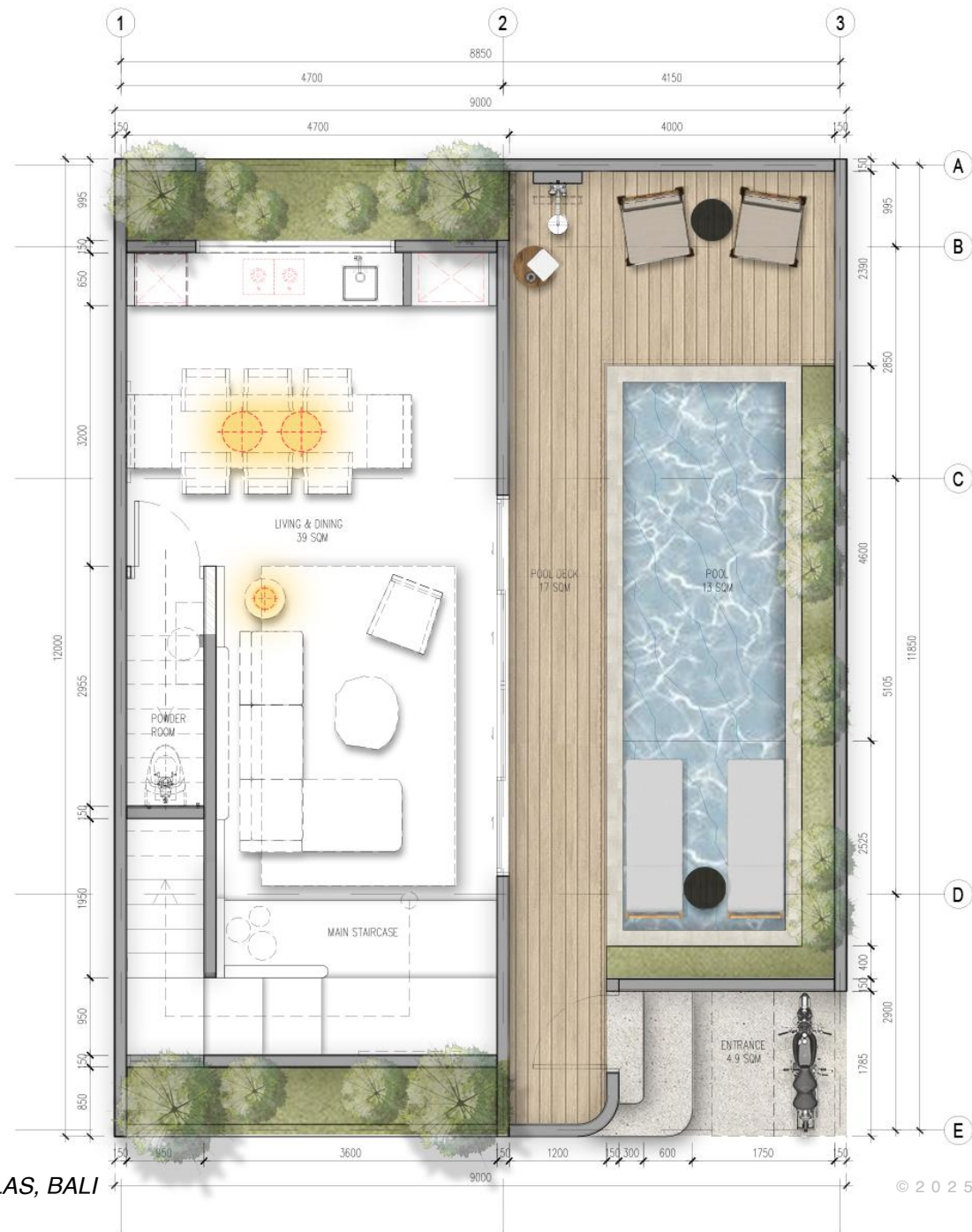


# BINGIN VILLAS | PLANS



**TOTAL LAND AREA:  
1113 SQM**





**GROUND FLOOR  
PLAN**  
50 SQM





2nd FLOOR PLAN  
73 SQM

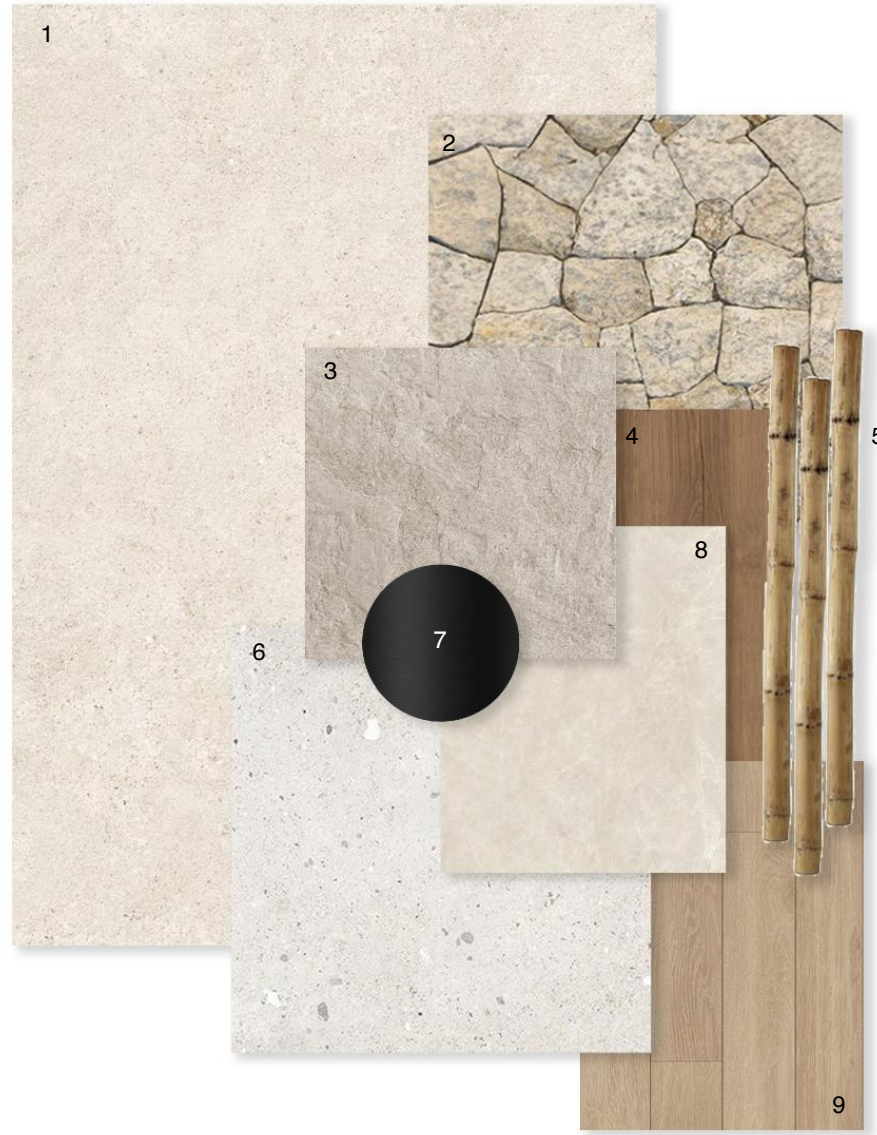




**ROOFTOP PLAN**  
22 SQM



# BINGIN VILLAS | MATERIALS



**Material Legend:**

1. Textured Paint (Wall Finishes)
2. Palimanan Stone (Wall Features)
3. Hammered Stone (Wall Features)
4. Rustic Wood – Scratch Finish (Door Finishes)
5. Bamboo Roof
6. Terrazzo Tiles (Floor Finishes)
7. Black Metal (Sanitary And Door Handle)
8. Ujung Pandang Stone (Floor And Wall Finishes – Bathroom)
9. Teak Wood (Floor Finishes – Bedroom & Outdoor Area)

# BINGIN VILLAS | PERSPECTIVES





BINGIN VILLAS

















THANK YOU!

Nadhifa Sabila | +62 852 4831 5292